



# TETON

Natural Reliability™

## XBS SERIES

### Basket Strainer

# INSTRUCTION MANUAL



DATE  
JUNE 2023

Teton Dynamics  
P.O. Box 3031  
San Leandro, CA 94578-0031

MODEL  
XBS100  
XBS112S  
XBS112  
XBS200  
XBS112LA  
XBS200LA

# XBS SERIES BASKET STRAINER

## XBS100/XBS112S/XBS112/XBS200/XBS112LA /XBS200LA

www.tetonus.com

800.752.0399

info@tetonus.com

**WELCOME TO THE WORLD OF TETON,  
NATURAL RELIABILITY™!**

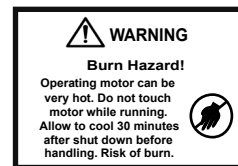
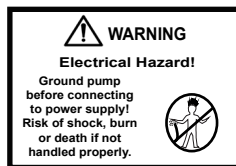
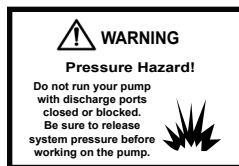
You Made The Right Choice Investing In  
This Quality Product. Thank You And Enjoy.

**BEFORE USING THIS PRODUCT, PLEASE READ  
THESE INSTRUCTIONS CAREFULLY AND  
FAMILIARIZE YOURSELF WITH THE UNIT.  
PLEASE KEEP THESE INSTRUCTIONS IN A SAFE  
PLACE FOR FUTURE REFERENCE.**

### IMPORTANT SAFEGUARDS



Please read the operating instructions and familiarize yourself with the equipment before placing it in service. Correct and safe use of the system requires strict compliance with these safety instructions. For safety reasons, persons less than 16 years of age or persons that are not familiar with these instructions, should not use this equipment.



WARNING: The strainer pot may be at a pressure that is higher or lower than the atmospheric pressure. Always open the drain plug on the strainer pot and allow for the pressure to equalize before removing the clear lid. Attempting to remove the lid before the pressure is equalized may result in a rapid pressure release.

### PRODUCT DESCRIPTION

This basket strainer is designed to block debris that could potentially clog the impeller or volute of pump, causing it to cease moving water. This strainer basket can also provide ease in priming your plumbing system during startup. Be sure to clean your strainer basket, as well as any skimmer baskets, so water flow is not obstructed and the pump is not overworked.

### UNPACKING

When unpacking the basket strainer, inspect carefully for any damage that may have occurred during transit. Check for loose, missing and damaged parts.

### SPECIFICATIONS

Capacity: 90 Cubic Inch

### BASIC CONSTRUCTION

Body-Glass Filled ABS

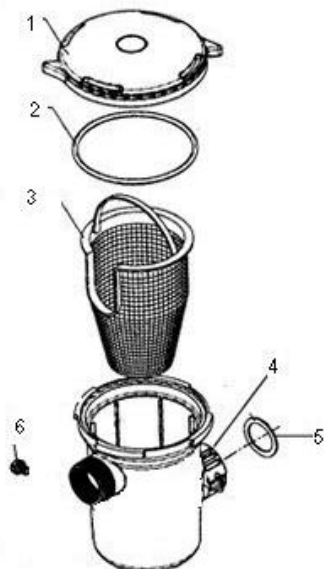
Lid- Lexon

## INSTALLATION

1. Carefully remove the strainer pot assembly from its shipping package.
2. Determine the installation location of the strainer pot assembly. Ensure that adequate space is provided for routine maintenance.
3. Plan carefully the layout of plumbing including cutting pipe to the exact length and ensuring that adapters will be aligned and square with the strainer pot assembly and pump. Note that the strainer must be installed so that water flow travels into the upper port and out the lower port. Using PVC glue, glue the plumbing in place once you are certain that location is as desired.
4. Ensure that the upper port gasket is properly positioned between the strainer body and the half union connection. Do not use grease or glue to attach as they may contain chemicals that could attack the plastic material.
5. Hand tighten the split nut connection onto the strainer and glue the plumbing to the half union fitting with PVC glue. (Make sure to hold plumbing firmly for 30 seconds while the glue sets up).
6. The lower port split nut connection on strainer can be
7. simply attached directly to most external pump (inlet adapters may be necessary, order as required). Use the gasket provided and ensure that it is sitting correctly between either the pump and split nut or inlet adapter and split nut (use Teflon tape with inlet adapters).
8. Hand tighten the split nut connection onto the inlet of the pump.
9. Turn system on and inspect both port connection(s) for leaks

## AVAILABLE REPLACEMENT PARTS - XUV16A/XUV40S/XUV80S/XUV120S

PART NO.	PART NO.	DESCRIPTION
1	BSLID	Lid
2	BSLOR	Lid O-ring
3	BSBSK	Strainer basket
4	BSSN1.5	1 1/2" Discharge split nut (Buttress Thd.)
5	BSSN	2" Discharge split nut (buttress Thd.)
6	711.4031	Gasket w/ridge
7	715.1202	Drain plug w/ O-ring
8	IA200	Inlet Adapter For XBS200 (white)



## LIMITED PRODUCT WARRANTY

- CMT Group LLC, a California limited liability company d/b/a Teton™ (the “Company”) expressly warrants to the original purchaser that, for a period of two (2) years from the date of sale, the covered product (the “Product”) will be reasonably free of defects in materials and workmanship and that when properly handled, will conform, within accepted tolerance to applicable manufacturing specifications. This Limited Product Warranty (“Limited Warranty”) only applies to Company’s Products that are used, stored, handled, and installed in the manner recommended by the Company in the Product instruction manual.
- Notwithstanding this Limited Warranty, customer acknowledges that some parts of the Product are consumable and may need to be replaced as part of ongoing Product maintenance, as recommended in the Product instruction manual, and are therefore not covered by this Limited Warranty.
- Company will, at its option, repair or replace Product without charge, if the Product fails or does not perform as warranted solely due to a manufacturing defect within the warranty period, subject to the exclusions set forth in this Limited Warranty.
- Repair or replacement during this two (2) year warranty shall not include: reasonable labor charges necessary to repair or replace the defective Product, shipping costs, and packing and insurance costs. During the entire two (2) year warranty, Company’s obligation as to repair or replacement shall further be limited to repair or replacement with the models of the Product that are available at the time of the repair or replacement, and shall be limited to the repair or replacement of only the specific Product that fails due to a manufacturing defect. Any repaired or replaced Product shall also remain subject to the original two (2) year warranty from the date of the original sale, and any repair or replacement shall not extend the original warranty period in any manner or start a new warranty period.
- You may obtain coverage under this Limited Warranty by providing Company with proof of original purchase. For service under this Limited Warranty, you must first contact the seller, distributor, retailer, or dealer from whom you purchased the Product and provide the following: copy of original receipt, your name and address, a description of the Product (including the serial number/date code set forth on the Product), and the nature of the defect. To expedite any warranty claims and processing, please submit to us the product registration card included with your purchased Product promptly after your purchase.
- All warranty repairs must be performed by the Company, or a Company authorized third-party. Any repairs performed by you or an unauthorized third-party will not be compensated by Company and are not the responsibility of the Company and will void this warranty.
- **DISCLAIMER OF WARRANTIES:** Company’s Products must be stored, handled, installed, used, and maintained in accordance with instructions provided by Company, and this Limited Warranty is conditioned upon compliance with all such instructions. Copies of the Company’s use guide/care guide are included with the Product and available from the Company at the address listed below. You may also obtain these materials by contacting Company at (800) 752-0399 or on the Company’s website [www.tetonus.com](http://www.tetonus.com).
- This Limited Warranty does not cover defects caused by:
  - non-compliance with Company’s use guides, care guides, and/or instruction manual. Such failures include, but are not limited to, exposure to physical abuse, including, but not limited to chemical abuse (e.g. harsh cleansers and solvents), thermal abuse or shock (e.g. excessive heat or cold), incompatibility of fluid used near the Product, or misuse;
  - improper storage, installation, handling, and/or use of the Product;
  - damage not resulting from manufacturing defects that occur while the Product is in the customer’s possession;
  - unreasonable or unintended use of Product;
  - products installed with known or visible manufacturing defects at the time of installation;
  - minor conditions such as stains, scratches, etc.
- Any information or suggestion by Company with respect to the Products concerning applications, specifications, or compliance with codes and standards is provided solely for your convenient reference and are made without any representation as to accuracy or suitability. You must verify and test the suitability of any information with respect to the Products for your specific application.
- **THE WARRANTIES SET FORTH IN THIS LIMITED WARRANTY ARE THE ONLY WARRANTIES MADE BY COMPANY IN CONNECTION WITH THE PRODUCT. COMPANY CAN NOT AND DOES NOT MAKE ANY IMPLIED OR EXPRESS WARRANTIES WITH RESPECT TO THE PRODUCT, AND DISCLAIMS ALL OTHER WARRANTIES, INCLUDING, BUT NOT LIMITED TO, ANY WARRANTY OF MERCHANTABILITY OR FITNESS FOR A PARTICULAR PURPOSE. PRODUCTS SOLD BY COMPANY ARE SOLD ONLY TO THE SPECIFICATIONS SPECIFICALLY SET FORTH BY COMPANY IN WRITING. OTHER THAN THE LIMITED WARRANTY SET FORTH HEREIN, COMPANY MAKES NO OTHER WARRANTIES, EXPRESS OR IMPLIED. COMPANY’S SOLE OBLIGATION UNDER THIS WARRANTY SHALL BE REPAIR OR REPLACEMENT OF NON-CONFORMING PRODUCTS. BUYER ASSUMES ALL RISK WHATSOEVER AS TO THE RESULT OF THE USE OF THE PRODUCTS PURCHASED, WHETHER USED SINGULARLY OR IN COMBINATION WITH ANY OTHER PRODUCTS OR SUBSTANCES.**
- **LIMITATION OF LIABILITY:** No claim by the buyer/owner of any kind, including claims for indemnification, shall be greater in amount than the purchase price of the Product in respect to which damages are claimed. IN NO EVENT SHALL COMPANY BE LIABLE TO BUYER/OWNER IN TORT, CONTRACT OR OTHERWISE, FOR ANY SPECIAL, INDIRECT, INCIDENTAL, CONSEQUENTIAL, RELIANCE, STATUTORY, SPECIAL, PUNITIVE OR EXEMPLARY DAMAGES, INCLUDING, BUT NOT LIMITED TO, LOST PROFITS, LOSS OF USE, LOSS OF TIME, LOSS OF REVENUES, INCONVENIENCE, LOSS BUSINESS OPPORTUNITIES, DAMAGE TO GOOD WILL OR REPUTATION, OR LOSS OF DATA, EVEN IF ADVISED OF THE POSSIBILITY OF SUCH DAMAGES OR SUCH DAMAGES COULD HAVE BEEN REASONABLY FORESEEN, IN CONNECTION WITH, ARISING OUT OF, OR AS A RESULT OF, THE SALE, DELIVERY, SERVICING, USE OR LOSS OF USE OF THE PRODUCT SOLD HEREUNDER, OR FOR ANY LIABILITY OF BUYER TO ANY THIRD PARTY WITH RESPECT THERETO.
- All provisions of this Limited Warranty are severable and if any provision shall be deemed invalid, the remaining provisions shall remain in full force and effect.
- Please consult your retailer for quality original Company replacement parts.
- Visit [www.tetonus.com](http://www.tetonus.com) for your nearest dealer.
- **Contact Information:**
  - Any question concerning this warranty should be addressed to:  
Teton  
P.O. Box, 1044  
San Leandro, CA 94577  
Phone: 800-752-0399  
Email: [info@tetonus.com](mailto:info@tetonus.com)  
Website address: [www.tetonus.com](http://www.tetonus.com)