



TETON

Natural Reliability™



XA SERIES

XA40K-XA80K

Teton Aeration Kit

ASSEMBLY INSTRUCTIONS

TETON AERATION KIT XA40K-XA80K

VERSION AUG 2020

www.tetonus.com

800.752.0399

info@tetonus.com

**WELCOME TO THE WORLD OF TETON,
NATURAL RELIABILITY!**

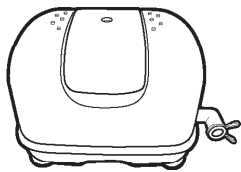
You Made The Right Choice Investing In These Quality Products. Thank You And Enjoy.

BEFORE USING THESE PRODUCTS, PLEASE READ THESE INSTRUCTIONS CAREFULLY AND FAMILIARIZE YOURSELF WITH THE ITEMS. PLEASE KEEP ASSEMBLY MANUAL IN A SAFE PLACE FOR FUTURE REFERENCE.

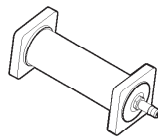
INTRODUCTION

The preceding configuration shows the simple assembly for assembling your new Teton Aeration Kit.

CONTENTS OF KIT



XAP40/XAP60K/XAP80
Air Pump



XAS6HD/XAS8HD/XAS12HD
Air Stone



WAH38.25 Air Tubing
(3/8" x 25ft)



SSC8 Clamps x 2

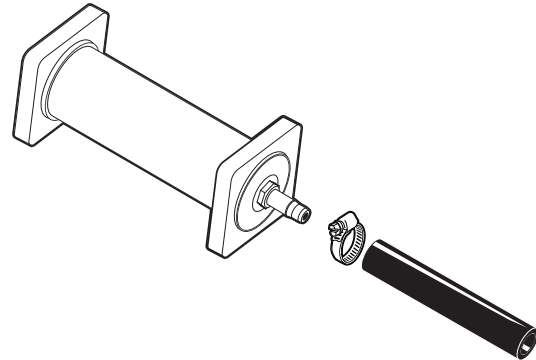


SHM3858 Fitting

STEP 1

- Place a stainless steel clamp (provided) onto one end of the tubing. Then with the air stone in hand, slip the hose onto the barbed fittings, applying a little pressure. Once the tubing is on the fitting, go ahead and tighten the clamp with a screw driver.

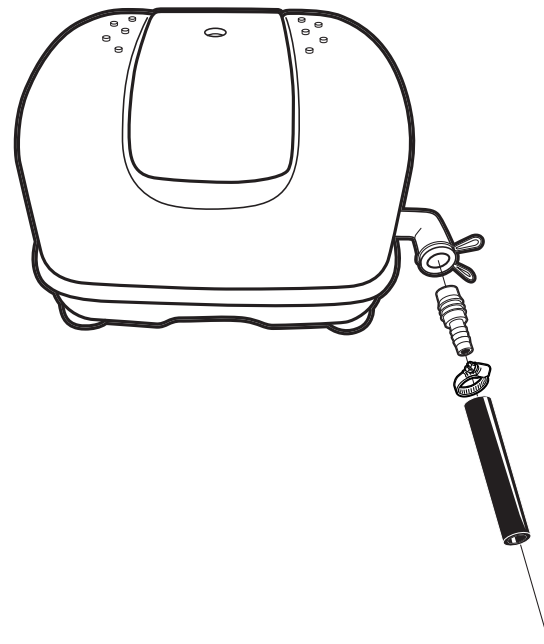
FIGURE A



STEP 2

- Remove pump from the box and locate the parts bag (provided in the pump box). Connect the ring style clamps by squeezing them onto both ends of the rubber coupling elbow. Then connect it to the pump on the port marked "OUT." Then slip the other stainless clamp onto remaining end of the tubing. Insert the fitting into the tubing and once again tighten the clamp with a screw driver. Next insert the other end of the fitting into the rubber elbow.

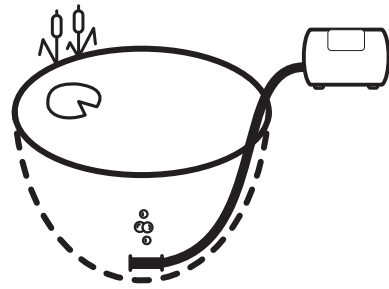
FIGURE B



STEP 3

- Locate air pump in an area free of dust and avoid areas prone to flooding. Air pumps located in areas below water level will require a check valve to prevent potential water flow back into the pump. Then place the air stone in the desired area of the pond and plug in the power cord to a GFCI protected power supply.

FIGURE D



SYMBOLS AND MEANING

DANGER

- DANGER: Keep the pump out of the reach of children!
- Warns that the failure to follow the directions given could cause serious risk to individuals or objects.



WARNING

- WARNING: This sign warns the operator that the failure to follow instructions, may damage the pump or the system.



Please consult your retailer for quality original Teton replacement parts.
Visit www.tetonus.com for your nearest dealer.


TETON
Natural Reliability™
800.752.0399
info@tetonus.com